

Product Datasheet

Glycogen Synthase 1 (phospho-S641) antibody (orb345405)

Description

Glycogen Synthase 1 (phospho-S641)



Species/Host

Rabbit

Reactivity

Human, Mouse

Conjugation

Unconjugated

Tested

ELISA, IHC, WB

Applications

Immunogen

Human Muscle Glycogen Synthase phosphopeptide corresponding to a S641 region of the human protein conjugated to Keyhole Limpet Hemocyanin (KLH).

Preservatives

0.01% (w/v) Sodium Azide

Form/Appearance

Liquid (sterile filtered)

Concentration

1.0 mg/mL

Storage

Store Phospho GYS Antibody at -20° C prior to opening. Aliquot contents and freeze at -20° C or below for extended storage. Avoid cycles of freezing and thawing. Centrifuge product if not completely clear after standing at room temperature. This product is stable for several weeks at 4° C as an undiluted liquid. Dilute only prior to immediate use.

Note

For research use only

Application notes

This phospho specific polyclonal antibody was tested by immunoblotting, immunohistochemistry, and ELISA. By ELISA the antibody was found to be reactive with the phosphorylated form of the immunizing peptide and minimally reactive with the non-phosphorylated form of the immunizing peptide. Immunoblotting will detect human and mouse muscle glycogen synthase. Although not tested, this antibody is likely functional in immunoprecipitation.

Isotype

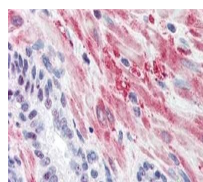
IgG

Clonality

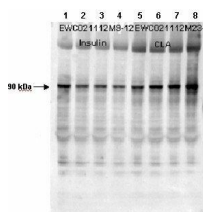
Polyclonal

Purity

Phospho Glycogen Synthase pS641 antibody is directed against human muscle glycogen synthase. The product was affinity purified from monospecific antiserum by immunoaffinity purification. Antiserum was first purified against the phosphorylated form



Immunohistochemical staining of Human Pr...



Western blot analysis of human muscle ti...