

Product Datasheet

CREB (phospho-S133) antibody (orb345380)

Description

CREB (phospho-S133) antibody

Species/Host

Rabbit

Reactivity

Human, Mouse, Rat

Conjugation

Unconjugated

Tested

ELISA, IHC, WB

Applications
Immunogen

CREB phospho peptide corresponding to amino acid residues 122-147 of the human protein conjugated to Keyhole Limpet Hemocyanin (KLH).

Preservatives

0.01% (w/v) Sodium Azide

Form/Appearance

Liquid (sterile filtered)

Concentration

0.064 mg/mL

Storage

Store vial at -20° C prior to opening. Aliquot contents and freeze at -20° C or below for extended storage. Avoid cycles of freezing and thawing. Centrifuge product if not completely clear after standing at room temperature. This product is stable for several weeks at 4° C as an undiluted liquid. Dilute only prior to immediate use.

Note

For research use only

Application notes

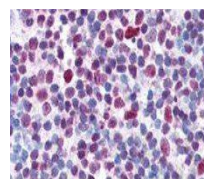
Anti-CREB pS133 antibody reacts with phosphorylated human CREB at pS133 and shows minimal reactivity by western blot with non-phosphorylated CREB and minimal reactivity (1%) by ELISA against the non-phosphorylated form of the immunizing peptide. This antibody was assayed against a variety of tissues including fibroblasts and B-cell lysates. Bands of 46 and 43 kDa corresponding to phosphorylated CREB are observed in western blots. Anti-CREB pS133 is suitable for the detection by immunoblot of phosphorylated human, mouse and rat CREB. No cross-reactivity occurs with non-phosphorylated CREB. For immunohistochemistry, formalin fixed, paraffin embedded human tissue shows moderate to strong nuclear staining in a variety of cells with minimal background staining. Although not tested this antibody is likely functional by FACS and immunoprecipitation.

Isotype

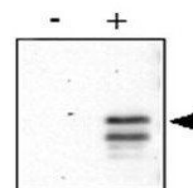
IgG

Clonality

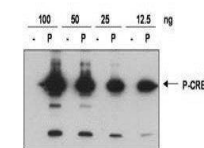
Polyclonal



Immunohistochemical staining of multi-hu...



Western blot analysis of control (-) and...



Western blot analysis of indicated amount...