

Product Datasheet

GFP antibody (FITC) (orb345307)

Description

GFP antibody (FITC)

Species/Host

Goat

Reactivity

Other

Conjugation

FITC

Tested

DOT, FLISA, IF, IHC, WB

Applications

Immunogen

Recombinant Green Fluorescent Protein (GFP) fusion protein corresponding to the full length amino acid sequence (246aa) derived from the jellyfish *Aequorea victoria*.

Preservatives

0.01% (w/v) Sodium Azide

Form/Appearance

Lyophilized

Concentration

1.0 mg/mL

Storage

Store anti-GFP at 4° C prior to restoration. For extended storage aliquot contents and freeze at -20° C or below. Avoid cycles of freezing and thawing. Centrifuge product if not completely clear after standing at room temperature. This product is stable for several weeks at 4° C as an undiluted liquid. Dilute only prior to immediate use.

Note

For research use only

Application notes

Anti-GFP Fluorescein Conjugated Antibody has been tested by dot blot and western blot and is suitable for immunomicroscopy and flow cytometry or FACS analysis as well as other antibody based fluorescent assays requiring lot-to-lot consistency.

Isotype

IgG

Clonality

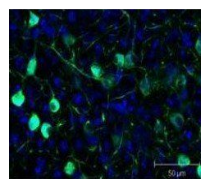
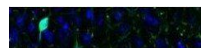
Polyclonal

Purity

GFP Fluorescein Conjugated Antibody was prepared from monospecific antiserum by immunoaffinity chromatography using Green Fluorescent Protein (*Aequorea victoria*) coupled to agarose beads followed by solid phase adsorption(s) to remove any unwanted reactivities. Assay by immunoelectrophoresis resulted in a single precipitin arc against anti-Goat Serum, anti-Fluorescein and purified and partially purified Green Fluorescent Protein (*Aequorea victoria*). No reaction was observed against Human, Mouse and Rat Serum Proteins.

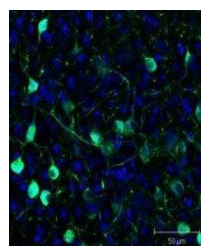
Uniprot ID

[P42212](#)



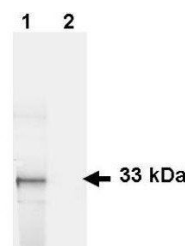
Immunofluorescence analysis of Sf-1:Cre

...



Immunofluorescence analysis of Sf-1:Cre

...



Western blot analysis of Lane 1: HeLa ce...