

Product Datasheet

Artemis antibody (orb345299)

Description

Artemis antibody

Species/Host

Goat

Reactivity

Human

Conjugation

Unconjugated

Tested

ELISA, IHC, WB

Applications

Immunogen

This affinity purified antibody was prepared from whole goat serum produced by repeated immunizations with a synthetic peptide corresponding an internal region of Human ARTEMIS (DCLRE1C DNA cross-link repair 1C).

Preservatives

0.01% (w/v) Sodium Azide

Form/Appearance

Liquid (sterile filtered)

Concentration

1.2 mg/mL

Storage

Store vial at -20° C prior to opening. Aliquot contents and freeze at -20° C or below for extended storage. Avoid cycles of freezing and thawing. Centrifuge product if not completely clear after standing at room temperature. This product is stable for several weeks at 4° C as an undiluted liquid. Dilute only prior to immediate use.

Note

For research use only

Application notes

This affinity purified antibody has been tested for use in ELISA, immunohistochemistry and western blotting. Reactivity in other immunoassays is unknown. This antibody detects a band of approximately 90 kDa (predicted molecular weight: 78 kDa).

Isotype

IgG

Clonality

Polyclonal

Purity

This is an affinity purified antibody produced by immunoaffinity chromatography using the immunizing peptide after immobilization to a solid phase. This antibody detects a band of the appropriate size in a number of different cell lines. However, it does not detect a band in cell lines that do not express artemis, such as the cell line CJ (see figure) and in an hTERT line (not shown).

Uniprot ID

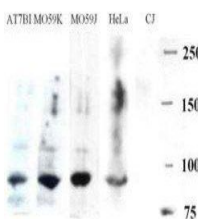
[Q96SD1](#)

NCBI

[76496495](#)



Immunohistochemical staining of human sp...



Western blot analysis of various cell ly...