

Product Datasheet

AP1G1 antibody (orb345295)

Description

AP1G1 antibody

Species/Host

Goat

Reactivity

Human

Conjugation

Unconjugated

Tested

ELISA, IP, WB

Applications

Immunogen

This affinity purified antibody was prepared from whole goat serum produced by repeated immunizations with a synthetic peptide corresponding to an internal region near aa 625-675 of Human AP1G1.

Preservatives

0.01% (w/v) Sodium Azide

Form/Appearance

Liquid (sterile filtered)

Concentration

0.7 mg/mL

Storage

Store vial at -20° C prior to opening. Aliquot contents and freeze at -20° C or below for extended storage. Avoid cycles of freezing and thawing. Centrifuge product if not completely clear after standing at room temperature. This product is stable for several weeks at 4° C as an undiluted liquid. Dilute only prior to immediate use.

Note

For research use only

Application notes

This affinity purified antibody has been tested for use in ELISA and by western blot. Specific conditions for reactivity should be optimized by the end user. Expect a band approximately 91 kDa in size corresponding to AP1G1 by western blotting in the appropriate cell lysate or extract.

Isotype

IgG

Clonality

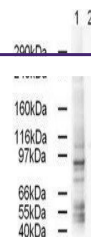
Polyclonal

Purity

This affinity purified antibody is directed against human AP1G1. The product was affinity purified from antiserum by immunoaffinity purification. A BLAST analysis was used to suggest reactivity with this protein from human, chimpanzee and orangutan based on 100% homology for the immunogen sequence. Cross reactivity with AP1G1 protein from mouse, rat, dog and chicken may occur as sequence homology varies by only one amino acid residue in this sequence as indicated by BLAST analysis. Reactivity with AP1G1 proteins from other sources is not known.

Uniprot ID

[O43747](https://www.uniprot.org/entry/O43747)



Western blot analysis of HeLa whole cell...