

Product Datasheet

p28 ING5 antibody (orb345292)

Description

p28 ING5 antibody

Species/Host

Goat

Reactivity

Human

Conjugation

Unconjugated

Tested

ELISA, WB

Applications

Immunogen

This affinity purified antibody was prepared from whole goat serum produced by repeated immunizations with a synthetic peptide corresponding to an internal region near aa 125-150 of Human p28 ING5 protein (Inhibitor of growth family, member 5).

Preservatives

0.01% (w/v) Sodium Azide

Form/Appearance

Liquid (sterile filtered)

Concentration

1.52 mg/mL

Storage

Store vial at -20° C prior to opening. Aliquot contents and freeze at -20° C or below for extended storage. Avoid cycles of freezing and thawing. Centrifuge product if not completely clear after standing at room temperature. This product is stable for several weeks at 4° C as an undiluted liquid. Dilute only prior to immediate use.

Note

For research use only

Application notes

This affinity purified antibody has been tested for use in ELISA and by western blot. Specific conditions for reactivity should be optimized by the end user. Expect a band approximately 28 kDa or 26 kDa in size corresponding to variants of ING5 by western blotting in the appropriate cell lysate or extract.

Isotype

IgG

Clonality

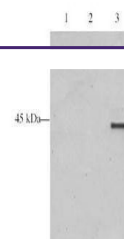
Polyclonal

Purity

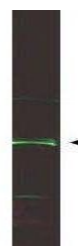
This is an affinity purified antibody produced by immunoaffinity chromatography using the immunizing peptide after immobilization to a solid phase. Reactivity occurs against human p28 ING5 protein. The sequence is present in both isoforms 1 and 2. However, 100% homology is on record for this protein from human and chimpanzee. Cross reactivity with p28 ING5 protein from frog, mouse, rat and chicken may not occur as sequence homology varies by one or more amino acids residues in this sequence as indicated by BLAST analysis. Reactivity with p28 ING5 proteins from other sources is not known.

Uniprot ID

Q8WYH8



Western blot analysis of Human ING5 pres...



Western blot analysis of Human ING5 pres...