

## Product Datasheet

### Esrp-1 antibody (orb345204)

**Description**

Esrp-1 antibody

**Species/Host**

Mouse

**Reactivity**

Mouse

**Conjugation**

Unconjugated

**Tested**

ELISA, WB

**Applications**
**Immunogen**

Anti-Esrp-1 was produced by repeated immunizations of full length recombinant mouse Esrp-1 fusion protein.

**Preservatives**

0.01% (w/v) Sodium Azide

**Form/Appearance**

Liquid (sterile filtered)

**Concentration**

1.0 mg/mL

**Storage**

Store vial at -20° C prior to opening. Aliquot contents and freeze at -20° C or below for extended storage. Avoid cycles of freezing and thawing. Centrifuge product if not completely clear after standing at room temperature. This product is stable for several weeks at 4° C as an undiluted liquid. Dilute only prior to immediate use.

**Note**

For research use only

**Application notes**

This protein-A purified antibody has been tested for use western blotting. Specific conditions for reactivity should be optimized by the end user. Expect a band approximately 75.5 kDa in size corresponding to Esrp-1 by western blotting in the appropriate cell lysate or extract.

**Isotype**

IgG2b

**Clonality**

Monoclonal

**Purity**

This product is an IgG fraction antibody purified by Protein-A chromatography followed by extensive dialysis against the buffer stated above. This antibody reacts with mouse Esrp-1 protein. A BLAST analysis of the immunizing protein sequence shows 100% homology with Esrp-1 from mouse and a 91% sequence homology with Esrp-1 from human, pig, rat, opossum, horse, cattle, panda, dog, and chimpanzee. The binding epitope of this monoclonal antibody has not been mapped.

**Uniprot ID**

**Q3US41**

**NCBI**

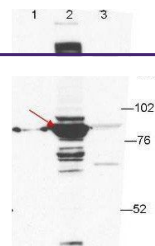
**NP\_918944.2**

**Dilution Range**

ELISA: 1:750,000, WB: 1:1000

**Expiration Date**

12 months from date of receipt.



Western blot analysis of 293T cell extra...