

Product Datasheet

E.coli Combined HCP antibody (Biotin) (orb344776)

Description

E.coli Combined HCP antibody (Biotin)

Species/Host

Rabbit

Reactivity

E. coli

Conjugation

Biotin

Tested

ELISA, WB

Applications

Immunogen

Anti-Host Cell Proteins Antibody was prepared by repeated immunizations with a full range of high molecular weight (HMW) and low molecular weight (LMW) proteins from E.Coli (BL21).

Preservatives

0.01% (w/v) Sodium Azide

Form/Appearance

Lyophilized

Concentration

1.0 mg/mL

Storage

Store vial at 4° C prior to restoration. For extended storage aliquot contents and freeze at -20° C or below. Avoid cycles of freezing and thawing. Centrifuge product if not completely clear after standing at room temperature. This product is stable for several weeks at 4° C as an undiluted liquid. Dilute only prior to immediate use.

Note

For research use only

Application notes

Anti-Host Cell Proteins Antibody detects over 300 E.coli proteins and has been tested by western blot and is suitable for ELISA.

Isotype

IgG

Clonality

Polyclonal

Purity

Host Cell Protein A purified antibody is directed against high molecular weight and low molecular weight E.coli Host Cell Proteins. The product was purified from monospecific antiserum by Protein A affinity chromatography. Reactivity is directed against E.coli Host Cell Proteins. Cross-reactivity with other species is likely but has not been determined. Reactivity against homologues from other sources is not known.

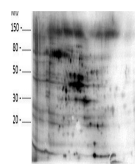
Dilution Range

ELISA: 1:1000-1:2000, WB: 1:500-1:1000

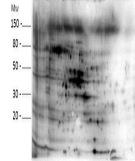
Expiration Date

12 months from date of receipt.

pH 5.8



pH 5.8



Western
blot
analysis of
E.coli Host
Cel...