

---

## Product Datasheet

### Histone H3 K27 methyl antibody (orb344702)

**Description**

Histone H3 K27 methyl antibody

**Species/Host**

Rabbit

**Reactivity**

Human

**Conjugation**

Unconjugated

**Tested**

DOT, WB

**Applications**
**Immunogen**

Histone H3 K27 methyl Antibody was prepared from whole rabbit serum produced by repeated immunizations with a synthetic peptide surrounding the K27 me3 site of human Histone H3.

**Preservatives**

0.01% (w/v) Sodium Azide. 0.02 M Potassium Phosphate, 0.15 M Sodium Chloride, pH 7.2

**Form/Appearance**

Liquid (sterile filtered)

**Concentration**

0.99 mg/mL

**Storage**

Store vial at -20° C prior to opening. Aliquot contents and freeze at -20° C or below for extended storage. Avoid cycles of freezing and thawing. Centrifuge product if not completely clear after standing at room temperature. This product is stable for several weeks at 4° C as an undiluted liquid. Dilute only prior to immediate use.

**Note**

For research use only

**Application notes**

Anti-Histone H3 K27 Methyl Antibody has been tested by dot blot and is suitable for ELISA and Western Blot. Specific conditions for reactivity should be optimized by the end user. Expect a band approximately ~15.4kDa corresponding to the appropriate cell lysate or extract.

**Isotype**

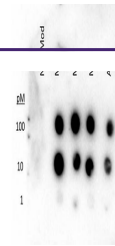
IgG

**Clonality**

Polyclonal

**Purity**

Histone H3 K27 Methyl Antibody was purified from monospecific antiserum by protein A chromatography. This antibody recognizes the Me1, Me2, Me3, and acetylated form of Lys27 for human Histone H3. A BLAST analysis was used to suggest cross-reactivity with Human, mouse, rat, and C. elegans based on 100% sequence homology. Cross-reactivity with Histone H3 [methyl Lys27] from other sources has not been determined.

**Uniprot ID**
**Q71DI3**


Dot Blot of Rabbit Histone H3 K27 me1-3 ...