

Product Datasheet

E.coli Combined HCP antibody (orb344701)

Description

E.coli Combined HCP antibody

Species/Host

Rabbit

Reactivity

E. coli

Conjugation

Unconjugated

Tested

2D-PAGE, ELISA, WB

Applications
Immunogen

Anti-Host Cell Proteins Antibody was prepared by repeated immunizations with a full range of high molecular weight (HMW) and low molecular weight (LMW) proteins from E.Coli (BL21).

Preservatives

0.01% (w/v) Sodium Azide

Form/Appearance

Liquid (sterile filtered)

Concentration

0.82 mg/mL

Storage

Store vial at -20° C or below prior to opening. This vial contains a relatively low volume of reagent (25 µL). To minimize loss of volume dilute 1:10 by adding 225 µL of the buffer stated above directly to the vial. Recap, mix thoroughly and briefly centrifuge to collect the volume at the bottom of the vial. Use this intermediate dilution when calculating final dilutions as recommended below. Store the vial at -20°C or below after dilution. Avoid cycles of freezing and thawing.

Note

For research use only

Application notes

Anti-Host Cell Proteins Antibody detects over 300 E.coli proteins and has been tested by 2D-Page, western blotting, and ELISA.

Isotype

IgG

Clonality

Polyclonal

Purity

Host Cell Protein A purified antibody is directed against high molecular weight and low molecular weight E.coli Host Cell Proteins. The product was purified from monospecific antiserum by Protein A affinity chromatography. Reactivity is directed against E.coli Host Cell Proteins. Cross-reactivity with other species is likely but has not been determined. Reactivity against homologues from other sources is not known.

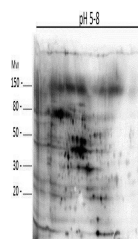
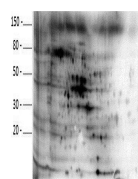
Dilution Range

ELISA: 1:1000-1:2000, WB: 1:500-1:1000

Expiration Date

12 months from date of receipt.

pH 5.8



Western blot analysis of E.coli Host Cel...