

## Product Datasheet

### E.coli Combined HCP antibody (orb344700)

**Description**

E.coli Combined HCP antibody

**Species/Host**

Rabbit

**Reactivity**

E. coli

**Conjugation**

Unconjugated

**Tested**

2D-PAGE, ELISA, WB

**Applications**
**Immunogen**

Anti-Host Cell Proteins Antibody was prepared by repeated immunizations with a full range of high molecular weight (HMW) and low molecular weight (LMW) proteins from E.Coli (BL21).

**Preservatives**

0.01% (w/v) Sodium Azide

**Form/Appearance**

Liquid (sterile filtered)

**Concentration**

1.02mg/mL

**Storage**

Store vial at -20° C prior to opening. Aliquot contents and freeze at -20° C or below for extended storage. Avoid cycles of freezing and thawing. Centrifuge product if not completely clear after standing at room temperature. This product is stable for several weeks at 4° C as an undiluted liquid. Dilute only prior to immediate use.

**Note**

For research use only

**Application notes**

Anti-Host Cell Proteins Antibody detects over 300 E.coli proteins and has been tested by 2D-Page, western blotting, and ELISA.

**Isotype**

IgG

**Clonality**

Polyclonal

**Purity**

Host Cell Protein A purified antibody is directed against high molecular weight and low molecular weight E.coli Host Cell Proteins. The product was purified from monospecific antiserum by Protein A affinity chromatography. Reactivity is directed against E.coli Host Cell Proteins. Cross-reactivity with other species is likely but has not been determined. Reactivity against homologues from other sources is not known.

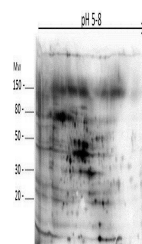
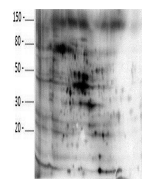
**Dilution Range**

ELISA: 1:1000-1:2000, WB: 1:500-1:1000

**Expiration Date**

12 months from date of receipt.

pH 5.8



Western blot analysis of E.coli Host Cel...