

## Product Datasheet

### LMW E.Coli Host Cell Proteins antibody (orb344699)

**Description**

LMW E.Coli Host Cell Proteins antibody

**Species/Host**

Rabbit

**Reactivity**

E. coli

**Conjugation**

Unconjugated

**Tested**

2D-PAGE, ELISA, WB

**Applications**
**Immunogen**

Anti-LMW E.Coli Host Cell Proteins Antibody was prepared by repeated immunizations with a mixture low molecular weight (LMW) proteins from E.Coli (BL21).

**Preservatives**

0.01% (w/v) Sodium Azide

**Form/Appearance**

Liquid (sterile filtered)

**Concentration**

1.29 mg/mL

**Storage**

Store vial at -20° C or below prior to opening. This vial contains a relatively low volume of reagent (25 µL). To minimize loss of volume dilute 1:10 by adding 225 µL of the buffer stated above directly to the vial. Recap, mix thoroughly and briefly centrifuge to collect the volume at the bottom of the vial. Use this intermediate dilution when calculating final dilutions as recommended below. Store the vial at -20°C or below after dilution. Avoid cycles of freezing and thawing.

**Note**

For research use only

**Application notes**

Anti-LMW Host Cell Proteins Antibody detects over 270 E.coli LMW proteins and has been tested by 2D-Page, western blotting, and ELISA.

**Isotype**

IgG

**Clonality**

Polyclonal

**Purity**

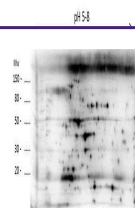
LMW Host Cell Protein A purified antibody is directed against low molecular weight E.coli Host Cell Proteins. The product was purified from monospecific antiserum by Protein A affinity chromatography.

**Dilution Range**

ELISA: 1:1000 - 1:2000, WB: 1:500-1:1000

**Expiration Date**

12 months from date of receipt.



Western blot analysis of E.coli Low Mole...