

Product Datasheet

LMW E.Coli Host Cell Protein antibody (orb344698)

Description

LMW E.Coli Host Cell Protein antibody

Species/Host

Rabbit

Reactivity

E. coli

Conjugation

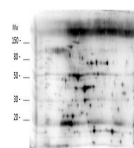
Unconjugated

Tested

2D-PAGE, ELISA, WB

Applications
Immunogen

Anti-LMW E.Coli Host Cell Proteins Antibody was prepared by repeated immunizations with a mixture low molecular weight (LMW) proteins from E.Coli (BL21).



Western blot analysis of E.coli Low Mole...

Preservatives

0.01% (w/v) Sodium Azide

Form/Appearance

Liquid (sterile filtered)

Concentration

1.29 mg/mL

Storage

Store vial at -20° C prior to opening. Aliquot contents and freeze at -20° C or below for extended storage. Avoid cycles of freezing and thawing. Centrifuge product if not completely clear after standing at room temperature. This product is stable for several weeks at 4° C as an undiluted liquid. Dilute only prior to immediate use.

Note

For research use only

Application notes

Anti-LMW Host Cell Proteins Antibody detects over 270 E.coli LMW proteins and has been tested by 2D-Page, western blotting, and ELISA.

Isotype

IgG

Clonality

Polyclonal

Purity

LMW Host Cell Protein A purified antibody is directed against low molecular weight E.coli Host Cell Proteins. The product was purified from monospecific antiserum by Protein A affinity chromatography.

Dilution Range

ELISA: 1:1000 - 1:2000, WB: 1:500-1:1000

Expiration Date

12 months from date of receipt.