

Product Datasheet

HMW E.Coli Host Cell Proteins antibody (orb344697)

Description

HMW E.Coli Host Cell Proteins antibody

Species/Host

Rabbit

Reactivity

E. coli

Conjugation

Unconjugated

Tested

2D-PAGE, ELISA, WB

Applications

Immunogen

Anti-HMW E.Coli Host Cell Proteins Antibody was prepared by repeated immunizations with a mixture high molecular weight (HMW) proteins from E.Coli (BL21).

Preservatives

0.01% (w/v) Sodium Azide

Form/Appearance

Liquid (sterile filtered)

Concentration

1.38 mg/ml

Storage

Store vial at -20° C or below prior to opening. This vial contains a relatively low volume of reagent (25 µL). To minimize loss of volume dilute 1:10 by adding 225 µL of the buffer stated above directly to the vial. Recap, mix thoroughly and briefly centrifuge to collect the volume at the bottom of the vial. Use this intermediate dilution when calculating final dilutions as recommended below. Store the vial at -20°C or below after dilution. Avoid cycles of freezing and thawing.

Note

For research use only

Application notes

Anti-HMW Host Cell Proteins Antibody detects over 250 E.coli HMW proteins and has been tested in 2D-Page, western blotting, and ELISA.

Isotype

IgG

Clonality

Polyclonal

Purity

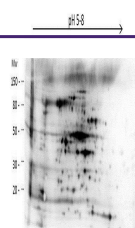
HMW Host Cell Protein A purified antibody is directed against high molecular weight E.coli Host Cell Proteins. The product was purified from monospecific antiserum by Protein A affinity chromatography.

Dilution Range

ELISA: 1:1000-1:2000, WB: 1:500-1:1000

Expiration Date

12 months from date of receipt.



Western blot analysis of E.coli High Mol...