

Product Datasheet

HMW E.Coli Host Cell Proteins antibody (orb344696)

Description

HMW E.Coli Host Cell Proteins antibody

Species/Host

Rabbit

Reactivity

E. coli

Conjugation

Unconjugated

Tested

2D-PAGE, ELISA, WB

Applications

Immunogen

Anti-HMW E.Coli Host Cell Proteins Antibody was prepared by repeated immunizations with a mixture high molecular weight (HMW) proteins from E.Coli (BL21).

Preservatives

0.01% (w/v) Sodium Azide

Form/Appearance

Liquid (sterile filtered)

Concentration

1.38 mg/ml

Storage

Store vial at -20° C prior to opening. Aliquot contents and freeze at -20° C or below for extended storage. Avoid cycles of freezing and thawing. Centrifuge product if not completely clear after standing at room temperature. This product is stable for several weeks at 4° C as an undiluted liquid. Dilute only prior to immediate use.

Note

For research use only

Application notes

Anti-HMW Host Cell Proteins Antibody detects over 250 E.coli HMW proteins and has been tested in 2D-Page, western blotting, and ELISA.

Isotype

IgG

Clonality

Polyclonal

Purity

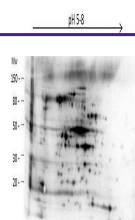
HMW Host Cell Protein A purified antibody is directed against high molecular weight E.coli Host Cell Proteins. The product was purified from monospecific antiserum by Protein A affinity chromatography.

Dilution Range

ELISA: 1:1000 - 1:2000, WB: 1:500 - 1:1000

Expiration Date

12 months from date of receipt.



Western blot analysis of E.coli High Mol...