

Product Datasheet

CRASP-2 antibody (orb344685)

Description

CRASP-2 antibody

Species/Host

Rabbit

Reactivity

Bacteria

Conjugation

Unconjugated

Tested

ELISA, WB

Applications

Immunogen

MBP-fusion protein corresponding to *Borrelia burgdorferi* CRASP-2 protein.

Preservatives

0.01% (w/v) Sodium Azide

Form/Appearance

Liquid (sterile filtered)

Concentration

1.1 mg/mL

Storage

Store vial at -20° C or below prior to opening. This vial contains a relatively low volume of reagent (25 µL). To minimize loss of volume dilute 1:10 by adding 225 µL of the buffer stated above directly to the vial. Recap, mix thoroughly and briefly centrifuge to collect the volume at the bottom of the vial. Use this intermediate dilution when calculating final dilutions as recommended below. Store the vial at -20°C or below after dilution. Avoid cycles of freezing and thawing.

Note

For research use only

Application notes

This protein-A purified antibody has been tested for use in ELISA and Western blotting. Specific conditions for reactivity should be optimized by the user. Expect a band approximately 25.4 kDa in size corresponding to *Borrelia burgdorferi* CRASP-2 protein by Western blotting in the appropriate cell lysate or extract.

Isotype

IgG

Clonality

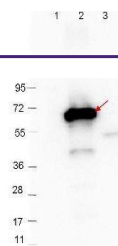
Polyclonal

Purity

This product was Protein-A purified and cross-adsorbed against MBP from monospecific antiserum by chromatography. This antibody is specific for *Borrelia burgdorferi* CRASP-2 protein. A BLAST analysis was used to suggest reactivity with CRASP-2 from *B. burgdorferi* sources based on 100% homology with the immunizing sequence. Partial cross-reactivity is expected against *B. garinii*, *B. spielmanii*, and *valaisiana* sources based on 91-89% homology. Cross-reactivity with CRASP-2 from other sources has not been determined.

Uniprot ID

O50665



Western blot analysis of Molecular weigh...