

Product Datasheet

CRASP-2 antibody (orb344684)

Description

CRASP-2 antibody

Species/Host

Rabbit

Reactivity

Bacteria

Conjugation

Unconjugated

Tested

ELISA, WB

Applications

Immunogen

MBP-fusion protein corresponding to *Borrelia burgdorferi* CRASP-2 protein.

Preservatives

0.01% (w/v) Sodium Azide

Form/Appearance

Lyophilized

Concentration

1.0 mg/mL

Storage

Store vial at 4° C prior to restoration. For extended storage aliquot contents and freeze at -20° C or below. Avoid cycles of freezing and thawing. Centrifuge product if not completely clear after standing at room temperature. This product is stable for several weeks at 4° C as an undiluted liquid. Dilute only prior to immediate use.

Note

For research use only

Application notes

This protein-A purified antibody has been tested for use in ELISA and Western blotting. Specific conditions for reactivity should be optimized by the user. Expect a band approximately 25.4 kDa in size corresponding to *Borrelia burgdorferi* CRASP-2 protein by Western blotting in the appropriate cell lysate or extract.

Isotype

IgG

Clonality

Polyclonal

Purity

This product was Protein-A purified and cross-adsorbed against MBP from monospecific antiserum by chromatography. This antibody is specific for *Borrelia burgdorferi* CRASP-2 protein. A BLAST analysis was used to suggest reactivity with CRASP-2 from *B. burgdorferi* sources based on 100% homology with the immunizing sequence. Partial cross-reactivity is expected against *B. garinii*, *B. spielmanii*, and *valaisiana* sources based on 91-89% homology. Cross-reactivity with CRASP-2 from other sources has not been determined.

Uniprot ID

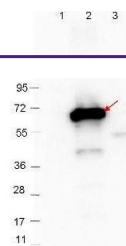
O50665

NCBI

NP_045500.1

Dilution Range

ELISA: 1:2,000, WB: 1:1,000



Western blot analysis of recombinant CRA...