

## Product Datasheet

### OspA antibody (orb344672)

## Description

OspA antibody

### Species/Host

Rabbit

### Reactivity

Bacteria

### Conjugation

Unconjugated

### Tested

ELISA, WB

### Applications

### Immunogen

MBP-fusion protein corresponding to *Borrelia burgdorferi* OspA protein.

### Preservatives

0.01% (w/v) Sodium Azide

### Form/Appearance

Lyophilized

### Concentration

1.12 mg/mL

### Storage

Store vial at 4° C prior to restoration. For extended storage aliquot contents and freeze at -20° C or below. Avoid cycles of freezing and thawing. Centrifuge product if not completely clear after standing at room temperature. This product is stable for several weeks at 4° C as an undiluted liquid. Dilute only prior to immediate use.

### Note

For research use only

### Application notes

This protein-A purified antibody has been tested for use in ELISA and Western blotting. Specific conditions for reactivity should be optimized by the user. Expect a band approximately 28.1 kDa in size corresponding to *Borrelia burgdorferi* OspA protein by Western blotting in the appropriate cell lysate or extract.

### Isotype

IgG

### Clonality

Polyclonal

### Purity

This product was Protein-A purified and cross-adsorbed against MBP from monospecific antiserum by chromatography. This antibody is specific for *Borrelia burgdorferi* OspA protein. A BLAST analysis was used to suggest cross-reactivity with OspA from *B. burgdorferi* and sources based on 100% homology with the immunizing sequence. Cross-reactivity with OspA or Osp from other sources has not been determined.

### Uniprot ID

**P0CL66**

### NCBI

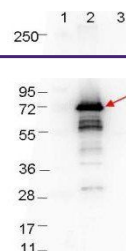
**NP\_045688.1**

### Dilution Range

ELISA: >1:5,000, WB: 1:1,000

### Expiration Date

12 months from date of receipt.



Western blot analysis of  
Lane 1:  
Molecul...