

Product Datasheet

Erpn/Ospe antibody (orb344667)

Description

Erpn/OspE antibody

Species/Host

Rabbit

Reactivity

Bacteria

Conjugation

Unconjugated

Tested

ELISA, WB

Applications

Immunogen

MBP-fusion protein corresponding to Borrelia burgdorferi ErpN/OspE protein.

Preservatives

0.01% (w/v) Sodium Azide

Form/Appearance

Liquid (sterile filtered)

Concentration

1.1 mg/mL

Storage

Store vial at -20° C or below prior to opening. This vial contains a relatively low volume of reagent (25 µL). To minimize loss of volume dilute 1:10 by adding 225 µL of the buffer stated above directly to the vial. Recap, mix thoroughly and briefly centrifuge to collect the volume at the bottom of the vial. Use this intermediate dilution when calculating final dilutions as recommended below. Store the vial at -20°C or below after dilution. Avoid cycles of freezing and thawing.

Note

For research use only

Application notes

Anti-ErpN/OspE antibody has been tested in ELISA and Western Blot. Specific conditions for reactivity should be optimized by the end user. Expect a band at 17.1 kDa in size corresponding to ErpN/OspE by Western blotting in the appropriate cell lysate or extract.

Isotype

IgG

Clonality

Polyclonal

Purity

This product was Protein-A purified and cross-adsorbed against MBP from monospecific antiserum by chromatography. It is directed against, and shows specific reactivity for, Borrelia burgdorferi OspE protein. Reactivity with ErpN/OspE protein from other sources has not been determined.

Uniprot ID

H7C7N5

NCBI

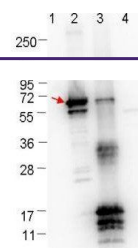
NP_051416.2

Dilution Range

ELISA: >1:5,000, WB: 1:1,000

Expiration Date

12 months from date of receipt.



Western blot analysis of Molecular weigh...