

Product Datasheet

Erpn/Ospe antibody (orb344666)

Description

Erpn/Ospe antibody

Species/Host

Rabbit

Reactivity

Bacteria

Conjugation

Unconjugated

Tested

ELISA, WB

Applications
Immunogen

MBP-fusion protein corresponding to Borrelia burgdorferi ErpN/OspE protein.

Preservatives

0.01% (w/v) Sodium Azide

Form/Appearance

Lyophilized

Concentration

1.0 mg/mL

Storage

Store vial at 4° C prior to restoration. For extended storage aliquot contents and freeze at -20° C or below. Avoid cycles of freezing and thawing. Centrifuge product if not completely clear after standing at room temperature. This product is stable for several weeks at 4° C as an undiluted liquid. Dilute only prior to immediate use.

Note

For research use only

Application notes

Anti-ErpN/OspE antibody has been tested in ELISA and Western Blot. Specific conditions for reactivity should be optimized by the end user. Expect a band at 17.1 kDa in size corresponding to ErpN/OspE by Western blotting in the appropriate cell lysate or extract.

Isotype

IgG

Clonality

Polyclonal

Purity

This product was Protein-A purified and cross-adsorbed against MBP from monospecific antiserum by chromatography. It is directed against, and shows specific reactivity for, Borrelia burgdorferi OspE protein. Reactivity with ErpN/OspE protein from other sources has not been determined.

Uniprot ID

H7C7N5

NCBI

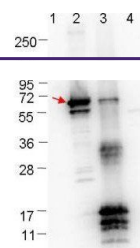
NP_051416.2

Dilution Range

ELISA: 1:5,000, WB: 1:1,000

Expiration Date

12 months from date of receipt.



Western blot analysis of Molecular weigh...