

Product Datasheet

IL21 antibody (orb344651)

Description

IL21 antibody

Species/Host

Rabbit

Reactivity

Bovine, Equine, Porcine

Conjugation

Unconjugated

Tested

ELISA, WB

Applications
Immunogen

This protein-A purified antibody was prepared from whole rabbit serum produced by repeated immunizations with a recombinant protein raised in yeast, corresponding to amino acid residues 24-152 of bovine IL-21 protein.

Preservatives

0.01% (w/v) Sodium Azide

Form/Appearance

Liquid (sterile filtered)

Concentration

1.0 mg/mL

Storage

Store vial at -20° C or below prior to opening. This vial contains a relatively low volume of reagent (25 µL). To minimize loss of volume dilute 1:10 by adding 225 µL of the buffer stated above directly to the vial. Recap, mix thoroughly and briefly centrifuge to collect the volume at the bottom of the vial. Use this intermediate dilution when calculating final dilutions as recommended below. Store the vial at -20°C or below after dilution. Avoid cycles of freezing and thawing.

Note

For research use only

Application notes

IL-21 is expressed in activated CD4-positive T-cells but not in CD8-positive T-cells, B-cells, or monocytes, and in HL-60 and THP-1 cell lines. This protein-A purified antibody has been tested for use in ELISA and western blotting. Specific conditions for reactivity should be optimized by the end user. Expect a band approximately 15.1 kDa in size corresponding to bovine IL-21 protein by western blotting in the appropriate cell lysate or extract.

Isotype

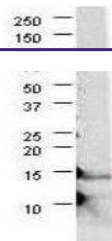
IgG

Clonality

Polyclonal

Purity

This product was Protein-A purified from monospecific antiserum by chromatography. This antibody is specific for bovine IL-21 protein. A BLAST analysis was used to suggest cross-reactivity with IL-21 from bovine sources based on 100% homology with the immunizing sequence. Based on 92% homology, there is a chance of cross-reactivity to porcine IL-21, 91% to horse IL-21, 89% to human and dog, 88% to macaque, 84% to platypus and Syrian hamster, 76-79% to mouse, 75% to rat, and 48% to chicken. Cross-



Western blot analysis of shows detection...

Biorbyt Ltd.

7 Signet Court, Swann's Road, Cambridge, CB5 8LA, United Kingdom

Email: info@biorbyt.com | Phone: +44 (0) 1223 859-353 | Fax: +44 (0)1223 280 240

Biorbyt LLC.

68 TW Alexander Drive
Research Triangle Park
Durham, North Carolina
27709, United States

Email: info@biorbyt.com | Phone: +1 (415) 906-5211 | Fax: +1 (415) 651-8558