

Product Datasheet

FKBP8 antibody (orb344645)

Description

FKBP8 antibody

Species/Host

Rabbit

Reactivity

Human

Conjugation

Unconjugated

Tested

ELISA, WB

Applications

Immunogen

This protein A purified antibody was prepared from whole rabbit serum produced by repeated immunizations with a synthetic peptide corresponding to an internal region of human FKBP8 protein.

Preservatives

0.01% (w/v) Sodium Azide

Form/Appearance

Liquid (sterile filtered)

Concentration

2.3 mg/mL

Storage

Store vial at -20° C or below prior to opening. This vial contains a relatively low volume of reagent (25 µL). To minimize loss of volume dilute 1:10 by adding 225 µL of the buffer stated above directly to the vial. Recap, mix thoroughly and briefly centrifuge to collect the volume at the bottom of the vial. Use this intermediate dilution when calculating final dilutions as recommended below. Store the vial at -20°C or below after dilution. Avoid cycles of freezing and thawing.

Note

For research use only

Application notes

This protein A purified antibody has been tested for use in ELISA and western blotting. Specific conditions for reactivity should be optimized by the end user. Expect a band approximately 64 kDa in size corresponding to FKBP8 by western blotting in the appropriate cell lysate or extract.

Isotype

IgG

Clonality

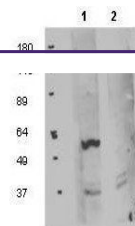
Polyclonal

Purity

This product was protein A purified from monospecific antiserum by immunoaffinity chromatography using protein A coupled to agarose beads. This antibody is specific for human FKBP8 protein. A BLAST analysis was used to suggest partial cross-reactivity with FKBP8 from mouse and rat sources based on ~93% homology with the immunizing sequence. Cross-reactivity with FKBP8 from other sources has not been determined.

Uniprot ID

[Q14318](#)



Western blot analysis of HEK293T whole c...