

Product Datasheet

FKBP8 antibody (orb344644)

Description

FKBP8 antibody

Species/Host

Rabbit

Reactivity

Human

Conjugation

Unconjugated

Tested

ELISA, WB

Applications

Immunogen

This protein A purified antibody was prepared from whole rabbit serum produced by repeated immunizations with a synthetic peptide corresponding to an internal region of human FKBP8 protein.

Preservatives

0.01% (w/v) Sodium Azide

Form/Appearance

Liquid (sterile filtered)

Concentration

2.3 mg/mL

Storage

Store vial at -20° C prior to opening. Aliquot contents and freeze at -20° C or below for extended storage. Avoid cycles of freezing and thawing. Centrifuge product if not completely clear after standing at room temperature. This product is stable for several weeks at 4° C as an undiluted liquid. Dilute only prior to immediate use.

Note

For research use only

Application notes

This protein A purified antibody has been tested for use in ELISA and western blotting. Specific conditions for reactivity should be optimized by the end user. Expect a band approximately 64 kDa in size corresponding to FKBP8 by western blotting in the appropriate cell lysate or extract.

Isotype

IgG

Clonality

Polyclonal

Purity

This product was protein A purified from monospecific antiserum by immunoaffinity chromatography using protein A coupled to agarose beads. This antibody is specific for human FKBP8 protein. A BLAST analysis was used to suggest partial cross-reactivity with FKBP8 from mouse and rat sources based on ~93% homology with the immunizing sequence. Cross-reactivity with FKBP8 from other sources has not been determined.

Uniprot ID

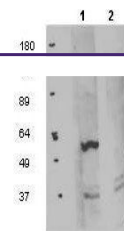
[Q14318](#)

NCBI

[52630440](#)

Dilution Range

ELISA: 1:25,000, WB: 1:500 - 1:2,000



Western blot analysis of HEK293T whole c...