

## Product Datasheet

### B-Phycoerythrin antibody (orb344584)

## Description

B-Phycoerythrin antibody

### Species/Host

Rabbit

### Conjugation

Unconjugated

### Tested Applications

DOT, ELISA, IHC, WB

### Immunogen

Phycoerythrin [Porphyridium creuentum]

### Preservatives

0.01% (w/v) Sodium Azide

### Form/Appearance

Liquid (sterile filtered)

### Concentration

1.1 mg/ml

### Storage

Store vial at -20° C prior to opening. Aliquot contents and freeze at -20° C or below for extended storage. Avoid cycles of freezing and thawing. Centrifuge product if not completely clear after standing at room temperature. This product is stable for several weeks at 4° C as an undiluted liquid. Dilute only prior to immediate use.

### Note

For research use only

### Application notes

Anti-B-Phycoerythrin antibody has been tested by ELISA, SDS-Page, and dot blot and is suitable for western blot and immunohistochemistry, as well as other assays requiring lot-to-lot consistency.

### Isotype

IgG

### Clonality

Polyclonal

### Purity

Anti-B-Phycoerythrin Antibody is an IgG fraction antibody purified from monospecific antiserum by a multi-step process which includes delipidation, salt fractionation and ion exchange chromatography followed by extensive dialysis against the buffer stated above. Assay by immunoelectrophoresis resulted in a single precipitin arc against anti-Rabbit Serum as well as purified and partially purified Phycoerythrin [Porphyridium creuentum].

### Uniprot ID

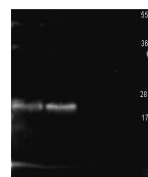
**P11392**

### Dilution Range

ELISA: 1:20,000 - 1:100,000, IHC: 1:1,000 - 1:5,000, WB: 1:2,000 - 1:10,000

### Expiration Date

12 months from date of receipt.



Western blot analysis of used to detect ...