

Product Datasheet

AKT3 PE antibody (RPE) (orb344550)

Description

AKT3 PE antibody (RPE)

Species/Host

Mouse

Reactivity

Human, Mouse, Rat

Conjugation

RPE

Tested

DOT, ELISA, FC, IF, IHC, WB

Applications

Immunogen

Anti-AKT3 Antibody was prepared from tissue culture supernatant by Protein A affinity chromatography using a synthetic peptide corresponding to internal residues of human AKT3 protein.

Preservatives

None

Form/Appearance

Lyophilized

Concentration

1mg/ml

Storage

Store vial at 4° C prior to restoration. Restore with deionized water (or equivalent). This product is stable at 4° C as an undiluted liquid. Dilute only prior to immediate use. Centrifuge product if not completely clear after standing at room temperature. Do not freeze after reconstitution. Store reagent in the dark. Use subdued lighting during handling and incubation of cells prior to analysis.

Note

For research use only

Application notes

Anti-AKT3 PE Antibody has been tested by ELISA and dot blot and is suitable for Flow Cytometry, immunohistochemistry, and western blotting. Expect a band approximately 56 kDa in size corresponding to AKT3 protein by western blotting in the appropriate cell lysate or extract. This monoclonal antibody reacts with human AKT. Specific conditions for reactivity should be optimized by the end user. For immunohistochemistry we recommend the use of fresh frozen tissues. Attempts at staining paraffin-embedded formalin fixed tissues were negative. No pre-treatment of sample is required.

Isotype

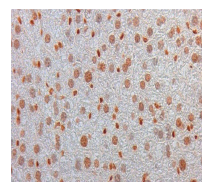
IgG1

Clonality

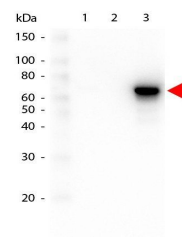
Monoclonal

Purity

Anti-AKT3 antibody is directed against human AKT3. The antibody detects both unphosphorylated and phosphorylated forms of the protein. Anti-AKT3



Immunohistochemical staining of Mouse Li...



Western blot analysis of GST Tagged reco...