

Product Datasheet

AKT3 FITC antibody (FITC) (orb344535)

Description

AKT3 FITC antibody (FITC)

Species/Host

Mouse

Reactivity

Human, Mouse, Rat

Conjugation

FITC

Tested

DOT, ELISA, FC, IF, IHC, WB

Applications

Immunogen

Anti-AKT3 Antibody was prepared from tissue culture supernatant by Protein A affinity chromatography using a synthetic peptide corresponding to internal residues of human AKT3 protein.

Preservatives

0.01% (w/v) Sodium Azide

Form/Appearance

Lyophilized

Concentration

1.0 mg/mL

Storage

Store vial at 4° C prior to restoration. Restore with deionized water (or equivalent). For extended storage aliquot contents and freeze at -20° C or below. Avoid cycles of freezing and thawing. Centrifuge product if not completely clear after standing at room temperature. This product is stable for several weeks at 4° C as an undiluted liquid. Dilute only prior to immediate use. Expiration date is one (1) year from date of restoration.

Note

For research use only

Application notes

Anti-AKT3 FITC Antibody has been tested by ELISA and dot blot and is suitable for Flow Cytometry, immunohistochemistry, and western blotting. Expect a band approximately 56 kDa in size corresponding to AKT3 protein by western blotting in the appropriate cell lysate or extract. This monoclonal antibody reacts with human AKT. Specific conditions for reactivity should be optimized by the end user. For immunohistochemistry we recommend the use of fresh frozen tissues. Attempts at staining paraffin-embedded formalin fixed tissues were negative. No pre-treatment of sample is required.

Isotype

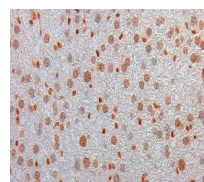
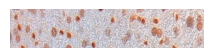
IgG1

Clonality

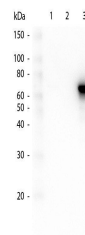
Monoclonal

Purity

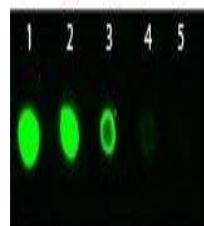
Anti-AKT3 antibody is directed against human AKT3. The antibody detects both



Immunohistochemical staining of mouse li...



Western blot analysis of GST Tagged reco...



Dot Blot analysis of 100 ng (Lane1), 33....