

## Product Datasheet

### STAT2 antibody (orb344465)

## Description

STAT2 antibody

### Species/Host

Mouse

### Reactivity

Human

### Conjugation

Unconjugated

### Tested

ELISA, IHC, WB

### Applications

### Immunogen

This monoclonal antibody was produced by repeated immunizations with a synthetic peptide corresponding to residues surrounding Y690 of mouse STAT2 protein.

### Preservatives

0.01% (w/v) Sodium Azide

### Form/Appearance

Liquid (sterile filtered)

### Concentration

1.0 mg/mL

### Storage

Store vial at -20° C or below prior to opening. This vial contains a relatively low volume of reagent (25 µL). To minimize loss of volume dilute 1:10 by adding 225 µL of the buffer stated above directly to the vial. Recap, mix thoroughly and briefly centrifuge to collect the volume at the bottom of the vial. Use this intermediate dilution when calculating final dilutions as recommended below. Store the vial at -20°C or below after dilution. Avoid cycles of freezing and thawing.

### Note

For research use only

### Application notes

This Protein-A purified antibody has been tested for use in ELISA, immunohistochemistry, and western blotting. Specific conditions for reactivity should be optimized by the end user. Expect a band approximately 113 kDa in size corresponding to STAT2 protein by western blotting in the appropriate cell lysate or extract.

### Isotype

IgG2a

### Clonality

Monoclonal

### Purity

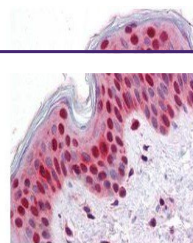
This Protein-A purified antibody is directed against human STAT2 protein. A BLAST analysis was used to suggest cross-reactivity with STAT2 protein from human, rat (73%) and mouse (76%), sources based on homology with the immunizing sequence. Reactivity against homologues from other sources is not known.

### Uniprot ID

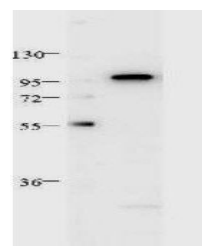
[Q9WVL2](#)

### NCBI

[4885615](#)



Immunohistochemical staining of human skin...



Western blot analysis of HeLa whole cell...