

Product Datasheet

STAT2 antibody (orb344464)

Description

STAT2 antibody

Species/Host

Mouse

Reactivity

Human

Conjugation

Unconjugated

Tested

ELISA, IHC, WB

Applications

Immunogen

This monoclonal antibody was produced by repeated immunizations with a synthetic peptide corresponding to residues near the carboxy terminus of mouse STAT2 protein.

Preservatives

0.01% (w/v) Sodium Azide

Form/Appearance

Liquid (sterile filtered)

Concentration

1.0 mg/mL

Storage

Store vial at -20° C prior to opening. Aliquot contents and freeze at -20° C or below for extended storage. Avoid cycles of freezing and thawing. Centrifuge product if not completely clear after standing at room temperature. This product is stable for several weeks at 4° C as an undiluted liquid. Dilute only prior to immediate use.

Note

For research use only

Application notes

This Protein-A purified antibody has been tested for use in ELISA, immunohistochemistry, and western blotting. Specific conditions for reactivity should be optimized by the end user. Expect a band approximately 113 kDa in size corresponding to STAT2 protein by western blotting in the appropriate cell lysate or extract.

Isotype

IgG2a

Clonality

Monoclonal

Purity

This Protein-A purified antibody is directed against human STAT2 protein. A BLAST analysis was used to suggest cross-reactivity with STAT2 protein from human, rat (73%) and mouse (76%), sources based on homology with the immunizing sequence. Reactivity against homologues from other sources is not known.

Uniprot ID

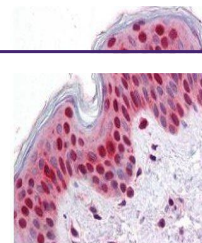
[Q9WVL2](#)

NCBI

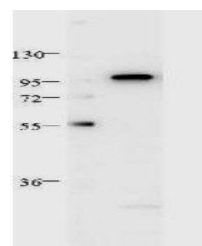
[4885615](#)

Dilution Range

ELISA: 1:5,000 - 1:10,000, IHC: 1:2.5 µg/mL, WB:



Immunohistochemical staining of human skin...



Western blot analysis of HeLa whole cell...