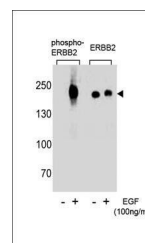
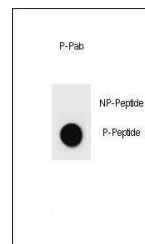


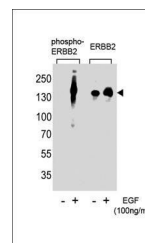
Product Datasheet

HER2 (phospho-Tyr1248) antibody (orb34444)

Description	Rabbit polyclonal antibody to HER2 (phospho-Tyr1248)
Species/Host	Rabbit
Reactivity	Human
Conjugation	Unconjugated
Tested Applications	DOT, WB
Immunogen	Synthetic Peptide
Target	ERBB2
Form/Appearance	Purified polyclonal antibody supplied in PBS with 0.09% (W/V) sodium azide. This antibody is first purified by protein G affinity chromatography. Then, the antibody fraction is peptide affinity purified in a 2-step procedure with control and phosphorylated peptides. The phospho-specific antibody is eluted with high and low pH buffers and neutralized immediately, followed by dialysis against PBS.
Note	For research use only
Isotype	Rabbit IgG
Clonality	Polyclonal
MW	137910
Uniprot ID	P04626
NCBI	NP_004439.2 , NP_001005862.1
Dilution Range	WB: 1:8000, DOT: 1:500
Expiration Date	12 months from date of receipt.



Western blot analysis of A431 cells using...



Western blot analysis of A431 cells using...