

## Product Datasheet

### HEF1 antibody (orb344432)

## Description

HEF1 antibody

## Species/Host

Mouse

## Reactivity

Human

## Conjugation

Unconjugated

## Tested

ELISA, IF, IP, WB

## Applications

## Immunogen

Anti-HEF1 monoclonal antibody was produced by repeated immunizations with a synthetic peptide corresponding to amino acid residues 82-398 of human HEF1 protein.

## Preservatives

0.01% (w/v) Sodium Azide

## Form/Appearance

Liquid (sterile filtered)

## Concentration

1.0 mg/mL

## Storage

Store vial at -20° C prior to opening. Aliquot contents and freeze at -20° C or below for extended storage. Avoid cycles of freezing and thawing. Centrifuge product if not completely clear after standing at room temperature. This product is stable for several weeks at 4° C as an undiluted liquid. Dilute only prior to immediate use.

## Note

For research use only

## Application notes

This monoclonal antibody has been tested for use in western blotting, immunoprecipitation and immunofluorescence. This clone recognizes HEF1 under non-denaturing conditions. Specific conditions for reactivity should be optimized by the end user. Expect bands approximately 115 and 105 in size corresponding to isoforms of HEF1 protein by western blotting in the appropriate cell lysate or extract. This antibody does not recognize p130Cas. Sin1 has not been tested. IF was performed using 4% PFA fixed cells. This monoclonal mostly detects HEF1 localized at the focal adhesion sites.

## Isotype

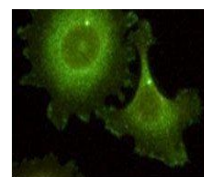
IgG2b

## Clonality

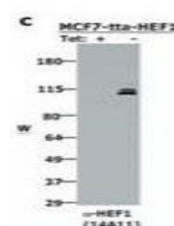
Monoclonal

## Purity

This Protein A purified antibody is directed against human HEF1 protein. The product was purified from tissue culture supernatant by chromatography. This antibody has only been tested on human cells. Reactivity against multiple isoforms is expected. Reactivity against homologues from other sources is not known. Specificity was determined by partial



Immunofluorescence analysis of HEF1 localization in cells.



Western blot analysis of MCF-7 cells induced with HEF1 antibody.

## Dilution Range

ELISA: 1:5,000 - 1:20,000, IF: 1:100, IP: 1:100, WB: 1:500