

## Product Datasheet

### 6X His Tag antibody (orb344412)

## Description

6X His Tag antibody

### Species/Host

Mouse

### Conjugation

Unconjugated

### Tested Applications

ELISA, IP, WB

### Immunogen

HIS Tag antibody was produced in mice by repeated immunizations with 6X His epitope tag peptide H-H-H-H-H-H conjugated to KLH using maleimide.

### Preservatives

0.01% (w/v) Sodium Azide

### Form/Appearance

Liquid (sterile filtered)

### Concentration

1.09 mg/mL

### Storage

Store 6X HIS Tag Antibody at -20° C prior to opening. Aliquot contents and freeze at -20° C or below for extended storage. Avoid cycles of freezing and thawing. Centrifuge product if not completely clear after standing at room temperature. Anti-6X HIS Tag is stable for several weeks at 4° C as an undiluted liquid. Dilute only prior to immediate use.

### Note

For research use only

### Application notes

Anti-6X His is optimally suited for monitoring expression of His-tagged fusion proteins. As such, Anti-6X His/6XHIS can be used to identify fusion proteins that contain the 6X His epitope. The antibody recognizes the His tag fused either to the amino- or carboxy- termini of targeted proteins. This antibody has been tested by ELISA, SDS-PAGE, and western blotting against both the immunizing peptide and His-containing recombinant proteins. Although not tested, this antibody is likely functional for immunoprecipitation and immunocytochemistry.

### Isotype

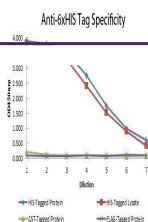
IgG1

### Clonality

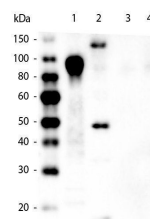
Monoclonal

### Purity

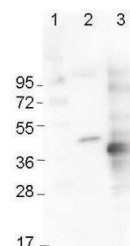
6X HIS Epitope Tag antibody was purified from concentrated tissue culture supernate by Protein A chromatography and is directed against the 6X His motif and is useful in determining its presence in various assays. This monoclonal anti-6X His tag antibody detects over-expressed proteins containing the 6X His epitope tag. To date, this antibody has reacted with all His tagged proteins so far tested. In western blotting of bacterial extracts, the antibody does not cross-react with endogenous proteins. The antibody recognizes the His-tag (His-His-His-His-His-His) fused to either the amino- or



Line graph illustrates the Ag-Ab r...



Western blot analysis of 100ng Purified ...



Western blot analysis of Mouse Anti-6x-H...