

Product Datasheet

NFkB p65 antibody (orb344390)

Description

NFkB p65 antibody

Species/Host

Mouse

Reactivity

Human

Conjugation

Unconjugated

Tested

ELISA, IF, IHC, WB

Applications

Immunogen

NFkB p65 (Rel A) peptide corresponding to a region near the C-terminus of the human protein conjugated to Keyhole Limpet Hemocyanin (KLH).

Preservatives

0.01% (w/v) Sodium Azide

Form/Appearance

Liquid (sterile filtered)

Concentration

0.98 mg/mL

Storage

Store vial at -20° C or below prior to opening. This vial contains a relatively low volume of reagent (25 µL). To minimize loss of volume dilute 1:10 by adding 225 µL of the buffer stated above directly to the vial. Recap, mix thoroughly and briefly centrifuge to collect the volume at the bottom of the vial. Use this intermediate dilution when calculating final dilutions as recommended below. Store the vial at -20°C or below after dilution. Avoid cycles of freezing and thawing.

Note

For research use only

Application notes

This protein A purified mouse monoclonal antibody is directed against NFkB p65 (Rel A) and a 1:1000 dilution recognizes a 65 kD band by Western blot against HeLa whole cell lysate. Control peptide (100-4165p) is sold separately. This product tested in WB, ICC, IHC, and IF.

Isotype

IgG2a

Clonality

Monoclonal

Purity

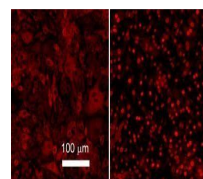
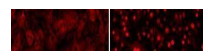
This product was purified from concentrated tissue culture supernate by Protein A chromatography and showed a single band by IEP (immunoelectrophoresis) when tested with anti-mouse antibody. Reactivity was confirmed by ELISA against peptide conjugated carrier protein and by Western blot against HeLa whole cell lysate.

Uniprot ID

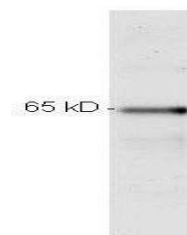
[Q04206](#)

NCBI

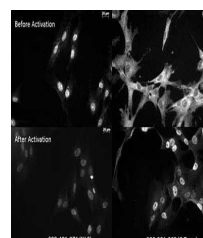
[223468676](#)



Immunofluorescence analysis of mouse end...



Western blot analysis of used to detect ...



Immunofluorescence analysis of Human Fib...