

Product Datasheet

Fructose-6-Phosphate Kinase antibody (orb344336)

Description

Fructose-6-Phosphate Kinase antibody

Species/Host

Goat

Reactivity

Rabbit

Conjugation

Unconjugated

Tested

ELISA, IF, WB

Applications
Immunogen

Full length native Fructose-6-Phosphate Kinase purified from rabbit muscle

Preservatives

0.01% (w/v) Sodium Azide

Form/Appearance

Lyophilized

Concentration

1.0 mg/ml

Storage

Store vial at 4° C prior to restoration. For extended storage aliquot contents and freeze at -20° C or below. Avoid cycles of freezing and thawing. Centrifuge product if not completely clear after standing at room temperature. This product is stable for several weeks at 4° C as an undiluted liquid. Dilute only prior to immediate use.

Note

For research use only

Application notes

FRUCTOSE-6-PHOSPHATE KINASE antibody has been tested for use in ELISA, immunofluorescence microscopy and western blot. Specific conditions for reactivity should be optimized by the end user. Expect a band approximately 48 kDa in size corresponding to the processed mature form of F6PK protein by western blotting in the appropriate cell lysate or extract.

Isotype

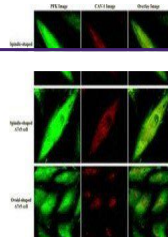
IgG

Clonality

Polyclonal

Purity

Anti-FRUCTOSE-6-PHOSPHATE KINASE is an IgG fraction antibody purified from monospecific antiserum by a multi-step process which includes delipidation, salt fractionation and ion exchange chromatography followed by extensive dialysis against the buffer stated above. Assay by immunoelectrophoresis resulted in a single precipitin arc against anti-Goat Serum as well as purified and partially purified Fructose-6-Phosphate Kinase [Rabbit muscle]. Cross reactivity against Fructose-6-



Immunofluorescence analysis of cultures

...

Biorbyt Ltd.

7 Signet Court, Swann's Road, Cambridge, CB5 8LA, United Kingdom

Email: info@biorbyt.com | Phone: +44 (0) 1223 859-353 | Fax: +44 (0)1223 280 240

Biorbyt LLC.

68 TW Alexander Drive
Research Triangle Park
Durham, North Carolina
27709. United States

Email: info@biorbyt.com | Phone: +1 (415) 906-5211 | Fax: +1 (415) 651-8558