

Product Datasheet

Protein A antibody (Texas Red) (orb344327)

Description

Protein A antibody (Texas Red)

Species/Host

Goat

Conjugation

Texas Red

Tested

FC, IF

Applications
Immunogen

Protein A [Staphylococcus aureus]

Preservatives

0.01% (w/v) Sodium Azide

Form/Appearance

Liquid (sterile filtered)

Concentration

1.0 mg/mL

Storage

Store vial at -20° C or below prior to opening. This vial contains a relatively low volume of reagent (25 µL). To minimize loss of volume dilute 1:10 by adding 225 µL of the buffer stated above directly to the vial. Recap, mix thoroughly and briefly centrifuge to collect the volume at the bottom of the vial. Use this intermediate dilution when calculating final dilutions as recommended below. Store the vial at -20°C or below after dilution. Avoid cycles of freezing and thawing.

Note

For research use only

Application notes

Anti-Protein A Texas Red Conjugated Antibody is suitable for immunomicroscopy and flow cytometry or FACS analysis as well as other antibody based fluorescent assays requiring lot-to-lot consistency.

Isotype

IgG

Clonality

Polyclonal

Purity

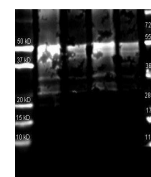
Anti-Protein A is an IgG fraction antibody purified from monospecific antiserum by a multi-step process which includes delipidation, salt fractionation and ion exchange chromatography followed by extensive dialysis against the buffer stated above. Assay by immunoelectrophoresis resulted in a single precipitin arc against purified and partially purified Protein A [Staphylococcus aureus], anti-Goat IgG and anti-Goat Serum. Cross reactivity against Protein A from other sources is unknown.

Dilution Range

FC: User Optimized, IF: 1:500 - 1:2,500

Expiration Date

12 months from date of receipt.



Western blot analysis of Protein A Reduc...