

## Product Datasheet

### Protein A antibody (Texas Red) (orb344326)

## Description

Protein A antibody (Texas Red)

### Species/Host

Goat

### Conjugation

Texas Red

### Tested

FC, IF

### Applications

### Immunogen

Protein A [Staphylococcus aureus]

### Preservatives

0.01% (w/v) Sodium Azide

### Form/Appearance

Lyophilized

### Concentration

1.0 mg/mL

### Storage

Store vial at 4° C prior to restoration. For extended storage aliquot contents and freeze at -20° C or below. Avoid cycles of freezing and thawing. Centrifuge product if not completely clear after standing at room temperature. This product is stable for several weeks at 4° C as an undiluted liquid. Dilute only prior to immediate use.

### Note

For research use only

### Application notes

Anti-Protein A Texas Red Conjugated Antibody is suitable for immunomicroscopy and flow cytometry or FACS analysis as well as other antibody based fluorescent assays requiring lot-to-lot consistency.

### Isotype

IgG

### Clonality

Polyclonal

### Purity

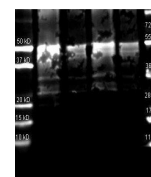
Anti-Protein A is an IgG fraction antibody purified from monospecific antiserum by a multi-step process which includes delipidation, salt fractionation and ion exchange chromatography followed by extensive dialysis against the buffer stated above. Assay by immunoelectrophoresis resulted in a single precipitin arc against purified and partially purified Protein A [Staphylococcus aureus], anti-Goat IgG and anti-Goat Serum. Cross reactivity against Protein A from other sources is unknown.

### Dilution Range

FC: User Optimized, IF: 1:500 - 1:2,500

### Expiration Date

12 months from date of receipt.



Western blot analysis of Protein A Reduc...