

Product Datasheet

Protein A antibody (Biotin) (orb344277)

Description

Protein A antibody (Biotin)

Species/Host

Goat

Conjugation

Biotin

Tested

Applications

DOT, ELISA, IHC, WB

Immunogen

Protein A [Staphylococcus aureus]

Preservatives

0.01% (w/v) Sodium Azide

Form/Appearance

Lyophilized

Concentration

1.0 mg/mL

Storage

Store vial at 4° C prior to restoration. For extended storage aliquot contents and freeze at -20° C or below. Avoid cycles of freezing and thawing. Centrifuge product if not completely clear after standing at room temperature. This product is stable for several weeks at 4° C as an undiluted liquid. Dilute only prior to immediate use.

Note

For research use only

Application notes

Anti-Protein A Biotin Conjugated has been tested by dot blot and western blot. This product is suitable to be assayed against 1.0 ug of Protein A in a standard capture ELISA using Peroxidase Conjugated Streptavidin #S000-03 and ABTS (2,2'-azino-bis-[3-ethylbenthiazoline-6-sulfonic acid]) code # ABTS-100 as a substrate for 30 minutes at room temperature. A working dilution of 1:4,000 to 1:20,000 of the reconstitution concentration is suggested for this product.

Isotype

IgG

Clonality

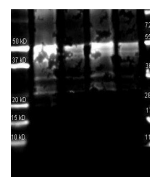
Polyclonal

Purity

Anti-Protein A is an IgG fraction antibody purified from monospecific antiserum by a multi-step process which includes delipidation, salt fractionation and ion exchange chromatography followed by extensive dialysis against the buffer stated above. Assay by immunoelectrophoresis resulted in a single precipitin arc against anti-Biotin, anti-Goat Serum as well as purified and partially purified Protein A [Staphylococcus aureus]. Cross reactivity against Protein A from other sources is unknown.

Dilution Range

ELISA: 1:2,000-1:10,000, IHC: 1:500-1:2,500, WB: 1:1,000-1:5,000



Western blot analysis of Protein A Reduc...