

## Product Datasheet

### Protein A antibody (FITC) (orb344224)

## Description

Protein A antibody (FITC)

### Species/Host

Goat

### Conjugation

FITC

### Tested

DOT, FC, WB

### Applications

### Immunogen

Protein A (Staphylococcus aureus)

### Preservatives

0.01% (w/v) Sodium Azide

### Form/Appearance

Liquid (sterile filtered)

### Concentration

1.0 mg/mL

### Storage

Store vial at -20° C or below prior to opening. This vial contains a relatively low volume of reagent (25 µL). To minimize loss of volume dilute 1:10 by adding 225 µL of the buffer stated above directly to the vial. Recap, mix thoroughly and briefly centrifuge to collect the volume at the bottom of the vial. Use this intermediate dilution when calculating final dilutions as recommended below. Store the vial at -20°C or below after dilution. Avoid cycles of freezing and thawing.

### Note

For research use only

### Application notes

Anti-Protein A has been tested in dot blot and western blot and is designed for immunofluorescence microscopy, fluorescence based plate assays (FLISA) and fluorescent western blotting. This product is also suitable for multiplex analysis, including multicolor imaging, utilizing various commercial platforms.

### Isotype

IgG

### Clonality

Polyclonal

### Purity

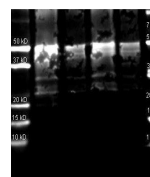
Anti-Protein A Fluorescein Conjugated is an IgG fraction antibody purified from monospecific antiserum by a multi-step process which includes delipidation, salt fractionation and ion exchange chromatography followed by extensive dialysis against the buffer stated above. Assay by immunoelectrophoresis resulted in a single precipitin arc against anti-fluorescein, anti-Goat Serum, and purified and partially purified Protein A.

### Dilution Range

FC: User Optimized

### Expiration Date

12 months from date of receipt.



Western blot analysis of Protein A Reduc...