

Product Datasheet

Protein A antibody (FITC) (orb344223)

Description

Protein A antibody (FITC)

Species/Host

Goat

Conjugation

FITC

Tested

DOT, FC, WB

Applications

Immunogen

Protein A (Staphylococcus aureus)

Preservatives

0.01% (w/v) Sodium Azide

Form/Appearance

Lyophilized

Concentration

1.0 mg/mL

Storage

Store vial at 4° C prior to restoration. For extended storage aliquot contents and freeze at -20° C or below. Avoid cycles of freezing and thawing. Centrifuge product if not completely clear after standing at room temperature. This product is stable for several weeks at 4° C as an undiluted liquid. Dilute only prior to immediate use.

Note

For research use only

Application notes

Anti-Protein A has been tested in dot blot and western blot and is designed for immunofluorescence microscopy, fluorescence based plate assays (FLISA) and fluorescent western blotting. This product is also suitable for multiplex analysis, including multicolor imaging, utilizing various commercial platforms.

Isotype

IgG

Clonality

Polyclonal

Purity

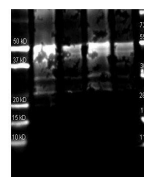
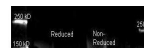
Anti-Protein A Fluorescein Conjugated is an IgG fraction antibody purified from monospecific antiserum by a multi-step process which includes delipidation, salt fractionation and ion exchange chromatography followed by extensive dialysis against the buffer stated above. Assay by immunoelectrophoresis resulted in a single precipitin arc against anti-fluorescein, anti-Goat Serum, and purified and partially purified Protein A.

Dilution Range

FC: User Optimized

Expiration Date

12 months from date of receipt.



Western blot analysis of Protein A Reduc...