

Product Datasheet

Protein A antibody (orb344172)

Description

Protein A antibody

Species/Host

Goat

Conjugation

Unconjugated

Tested Applications

ELISA, IP, WB

Immunogen

Protein A [Staphylococcus aureus]

Preservatives

0.01% (w/v) Sodium Azide

Form/Appearance

Liquid (sterile filtered)

Concentration

1.0 mg/mL

Storage

Store vial at -20° C prior to opening. Aliquot contents and freeze at -20° C or below for extended storage. Avoid cycles of freezing and thawing. Centrifuge product if not completely clear after standing at room temperature. This product is stable for several weeks at 4° C as an undiluted liquid. Dilute only prior to immediate use.

Note

For research use only

Application notes

Anti-Protein A Antibody has been tested by western blot and is suitable for immunoprecipitation, immunodiffusion, conjugation and most immunological methods requiring high titer and specificity. Optimal concentration in immunoassays should be determined by the researcher.

Isotype

IgG

Clonality

Polyclonal

Purity

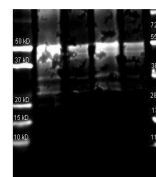
Protein A Antibody is an IgG fraction antibody purified from monospecific antiserum by a multi-step process which includes delipidation, salt fractionation and ion exchange chromatography followed by extensive dialysis against the buffer stated above. Assay by immunoelectrophoresis resulted in a single precipitin arc against purified and partially purified Protein A [Staphylococcus aureus] and anti-Goat Serum. Cross reactivity against Protein A from other sources is unknown.

Dilution Range

ELISA: 1:20,000 - 1:100,000, IP: 1:1,000 - 1:5,000, WB: 1:2,000 - 1:10,000

Expiration Date

12 months from date of receipt.



Western blot analysis of Protein A Reduc...