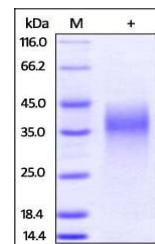


Product Datasheet

Mouse LIF Protein (orb334910)

| | |
|--------------------------|--|
| Description | Leukemia inhibitory factor, or LIF, an interleukin 6 class cytokine, is a protein in cells that affe... |
| Reactivity | Mouse |
| Endotoxins | 1.0 EU per µg |
| Conjugation | Unconjugated |
| Target | LIF |
| Preservatives | PBS, pH7.4 |
| Form/Appearance | Powder |
| Storage | -20°C to -70°C for 12 months in lyophilized state; -70°C for 3 months under sterile conditions after reconstitution. For long term storage, the product should be stored at lyophilized state at -20°C or lower. |
| Tag | C-6×His |
| Note | For research use only |
| Application notes | This protein carries a polyhistidine tag at the C-terminus. The protein has a calculated MW of 20.8 kDa. The protein migrates as 33-45 kDa under reducing (R) condition (SDS-PAGE) due to glycosylation. |
| Purity | 90% |
| Source | Mouse LIF, His Tag (orb334910) is expressed from human 293 cells (HEK293). It contains AA Ser 24 - Phe 203 (Accession # P09056-1). |
| MW | 20.8 kDa |
| NCBI | NP_032527.1 |
| Expiration Date | 6 months from date of receipt. |



SDS-PAGE
analysis of
Mouse LIF
protein