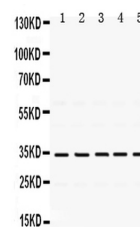


Product Datasheet

TIMP3 Antibody (orb334563)

Description	TIMP3 Antibody
Species/Host	Rabbit
Reactivity	Human, Mouse, Rat
Conjugation	Unconjugated
Tested Applications	ELISA, WB
Immunogen	E. coli-derived human TIMP3 recombinant protein (Position: C24-P211). Human TIMP3 shares 97.9% and 97.3% amino acid (aa) sequence identity with mouse and rat TIMP3, respectively.
Form/Appearance	Lyophilized
Concentration	Adding 0.2 ml of distilled water will yield a concentration of 500 µg/ml.
Storage	Store at -20°C for one year from date of receipt. After reconstitution, at 4°C for one month. It can also be aliquotted and stored frozen at -20°C for six months. Avoid repeated freeze-thaw cycles.
Note	For research use only
Application notes	Tested Species: In-house tested species with positive results. Other applications have not been tested. Optimal dilutions should be determined by end users. . Add 0.2ml of distilled water will yield a concentration of 500ug/ml.
Isotype	Rabbit IgG
Clonality	Polyclonal
MW	24145 MW
Uniprot ID	P35625
Dilution Range	ELISA , 0.1-0.5µg/ml, Human, -Western blot, 0.1-0.5µg/ml, Human, Mouse, Rat
Expiration Date	12 months from date of receipt.



WB analysis of TIMP3 using anti-TIMP3 an...