

## Product Datasheet

### SULT2A1 Antibody (orb334553)

**Description**
**SULT2A1 Antibody**
**Species/Host**

Rabbit

**Reactivity**

Human, Mouse, Rat

**Conjugation**

Unconjugated

**Tested**

IHC, WB

**Applications**
**Immunogen**

A synthetic peptide corresponding to a sequence at the C-terminus of human SULT2A1 (253-285aa DWKNHFTVAQAEDFDKLFQEKMAADLPRELFPE), different from the related mouse sequence by seven amino acids, and from the related rat sequence by eight amino acids.

**Form/Appearance**

Lyophilized

**Concentration**

Adding 0.2 ml of distilled water will yield a concentration of 500 µg/ml.

**Storage**

Store at -20°C for one year from date of receipt. After reconstitution, at 4°C for one month. It can also be aliquotted and stored frozen at -20°C for six months. Avoid repeated freeze-thaw cycles.

**Note**

For research use only

**Application notes**

Tested Species: In-house tested species with positive results.  
By Heat: Boiling the paraffin sections in 10mM citrate buffer, pH6.0, for 20mins is required for the staining of formalin/paraffin sections. Other applications have not been tested. Optimal dilutions should be determined by end users. .  
Add 0.2ml of distilled water will yield a concentration of 500ug/ml.

**Isotype**

Rabbit IgG

**Clonality**

Polyclonal

**MW**

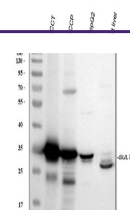
33780 MW

**Uniprot ID**
**Q06520**
**Dilution Range**

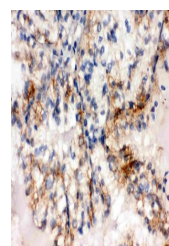
Western blot, 0.1-0.5µg/ml, Human, Rat  
Immunohistochemistry (Paraffin-embedded Section), 0.5-1µg/ml, Human, Mouse, Rat, By Heat

**Expiration Date**

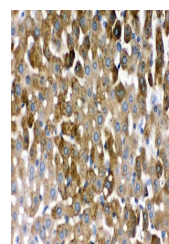
12 months from date of receipt.



WB analysis of SULT2A1 using anti-SULT2A1...



IHC analysis of SULT2A1 using anti-SULT2A1...



IHC analysis of SULT2A1 using anti-SULT2A1...