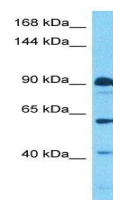


## Product Datasheet

### PHC3 antibody (orb331498)

|                            |  |
|----------------------------|--|
| <b>Description</b>         | Rabbit polyclonal antibody to PHC3   |
| <b>Species/Host</b>        | Rabbit   |
| <b>Reactivity</b>          | Human  |
| <b>Conjugation</b>         | Unconjugated   |
| <b>Tested Applications</b> | WB   |
| <b>Immunogen</b>           | The immunogen is a synthetic peptide directed towards the C-terminal region of Human PHC3  |
| <b>Target</b>              | PHC3   |
| <b>Preservatives</b>       | Liquid. Purified antibody supplied in 1x PBS buffer with 0.09% (w/v) sodium azide and 2% sucrose.                                      |
| <b>Form/Appearance</b>     | Liquid. Purified antibody supplied in 1x PBS buffer with 0.09% (w/v) sodium azide and 2% sucrose.                                      |
| <b>Concentration</b>       | 0.5 mg/ml  |
| <b>Storage</b>             | For short term use, store at 2-8°C up to 1 week. For long term storage, store at -2°C in small aliquots to prevent freeze-thaw cycles. |
| <b>Note</b>                | For research use only  |
| <b>Protein Sequence</b>    | Synthetic peptide located within the following region:<br>LSRWNRKPDNQSLGHRGRRPSGPDGAAREHILRQLPITYPSAEEDLASHE                           |
| <b>Clonality</b>           | Polyclonal   |
| <b>MW</b>                  | 108kDa   |
| <b>Uniprot ID</b>          | <b>Q8NDX5</b>  |
| <b>NCBI</b>                | <b>XP_005247847</b>  |
| <b>Expiration Date</b>     | 12 months from date of receipt.  |



Western blot analysis of human 293T cells. Whole cell lysates were probed with PHC3 antibody (orb331498).