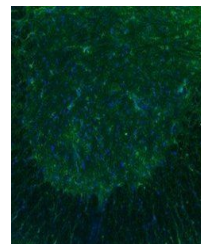


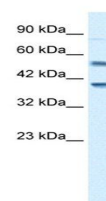
Product Datasheet

HTR3B antibody (orb329817)

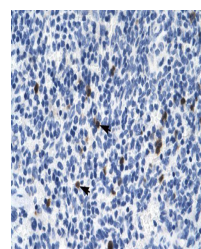
Description	Rabbit polyclonal antibody to HTR3B
Species/Host	Rabbit
Reactivity	Canine, Guinea pig, Human, Mouse, Porcine, Rat
Conjugation	Unconjugated
Tested Applications	ICC, IF, IHC-P, WB
Immunogen	The immunogen is a synthetic peptide directed towards the N terminal region of human HTR3B
Target	HTR3B
Preservatives	Liquid. Purified antibody supplied in 1x PBS buffer with 0.09% (w/v) sodium azide and 2% sucrose.
Form/Appearance	Liquid. Purified antibody supplied in 1x PBS buffer with 0.09% (w/v) sodium azide and 2% sucrose.
Concentration	0.5 mg/ml
Storage	For short term use, store at 2-8C up to 1 week. For long term storage, store at -2°C in small aliquots to prevent freeze-thaw cycles.
Note	For research use only
Protein Sequence	Synthetic peptide located within the following region: PLWACILVAAGILATDTHHPQDSALYHLSKQLLQKYHKEVRPVYNWTKAT
Clonality	Polyclonal
MW	49kDa
Uniprot ID	O95264
NCBI	NP_006019
Expiration Date	12 months from date of receipt.



Immunohistochemical staining of mouse Sp...



Western blot analysis of Jurkat cell lys...



Immunohistochemical staining of human Sp...