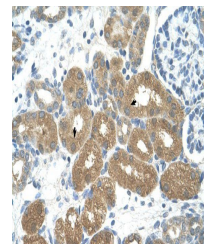


## Product Datasheet

### FOXP2 antibody (orb329742)

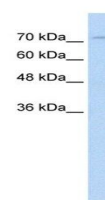
<b>Description</b>	Rabbit polyclonal antibody to FOXP2
<b>Species/Host</b>	Rabbit
<b>Reactivity</b>	Canine, Equine, Goat, Human, Mouse, Porcine, Rat, Zebrafish
<b>Conjugation</b>	Unconjugated
<b>Tested Applications</b>	IHC, WB
<b>Immunogen</b>	The immunogen is a synthetic peptide directed towards the N terminal region of human FOXP2
<b>Target</b>	FOXP2
<b>Preservatives</b>	Liquid. Purified antibody supplied in 1x PBS buffer with 0.09% (w/v) sodium azide and 2% sucrose.
<b>Form/Appearance</b>	Liquid. Purified antibody supplied in 1x PBS buffer with 0.09% (w/v) sodium azide and 2% sucrose.
<b>Concentration</b>	1.0 mg/ml
<b>Storage</b>	For short term use, store at 2-8°C up to 1 week. For long term storage, store at -2°C in small aliquots to prevent freeze-thaw cycles.
<b>Note</b>	For research use only
<b>Protein Sequence</b>	Synthetic peptide located within the following region: SGLKSPKSSDKQRPLQVPVSVAMMTPQVITPQQMQQILQQQVLSPQQLQA
<b>Clonality</b>	Polyclonal
<b>MW</b>	80kDa
<b>Uniprot ID</b>	<b>O15409</b>
<b>NCBI</b>	<b>NP_055306</b>
<b>Expiration Date</b>	12 months from date of receipt.



Immunohistochemical staining of human kidney tissue.



Western blot analysis of human HepG2 tissue lysate.



Western blot analysis of HepG2 cell lysate.