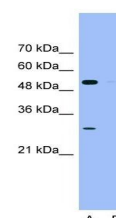


## Product Datasheet

### SOX5 antibody (orb329718)

<b>Description</b>	Rabbit polyclonal antibody to SOX5
<b>Species/Host</b>	Rabbit
<b>Reactivity</b>	Canine, Equine, Guinea pig, Human, Mouse, Rat
<b>Conjugation</b>	Unconjugated
<b>Tested Applications</b>	WB
<b>Immunogen</b>	The immunogen is a synthetic peptide directed towards the C terminal region of human SOX5
<b>Target</b>	SOX5
<b>Preservatives</b>	Liquid. Purified antibody supplied in 1x PBS buffer with 0.09% (w/v) sodium azide and 2% sucrose.
<b>Form/Appearance</b>	Liquid. Purified antibody supplied in 1x PBS buffer with 0.09% (w/v) sodium azide and 2% sucrose.
<b>Concentration</b>	0.5 mg/ml
<b>Storage</b>	For short term use, store at 2-8°C up to 1 week. For long term storage, store at -2°C in small aliquots to prevent freeze-thaw cycles.
<b>Note</b>	For research use only
<b>Protein Sequence</b>	Synthetic peptide located within the following region: PEGMPVIQSTYGVKGEEPHIKEEIQAEINGEIYDEYDEEEDDPDVDYG
<b>Clonality</b>	Polyclonal
<b>MW</b>	84 kDa
<b>Uniprot ID</b>	<b>P35711</b>
<b>NCBI</b>	<b>NP_821078</b>
<b>Expiration Date</b>	12 months from date of receipt.



Western blot analysis of human HepG2 cells...



Western blot analysis of HeLa cell lysate...