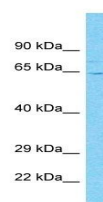


Product Datasheet

C19orf68 antibody (orb327222)

Description	Rabbit polyclonal antibody to C19orf68
Species/Host	Rabbit
Reactivity	Human
Conjugation	Unconjugated
Tested Applications	WB
Immunogen	The immunogen is a synthetic peptide directed towards the C-terminal region of Human C19orf68
Target	ZSWIM9
Preservatives	Liquid. Purified antibody supplied in 1x PBS buffer with 0.09% (w/v) sodium azide and 2% sucrose.
Form/Appearance	Liquid. Purified antibody supplied in 1x PBS buffer with 0.09% (w/v) sodium azide and 2% sucrose.
Concentration	0.5 mg/ml
Storage	For short term use, store at 2-8°C up to 1 week. For long term storage, store at -2°C in small aliquots to prevent freeze-thaw cycles.
Note	For research use only
Protein Sequence	Synthetic peptide located within the following region: GEKGRALQIRDWRGGRLNQKPRGLEGGVLRGSKLEKGHLRGPEIRDWRG
Clonality	Polyclonal
MW	68kDa
Uniprot ID	Q86XI8
Expiration Date	12 months from date of receipt.



Western blot analysis of human COLO205 t...