

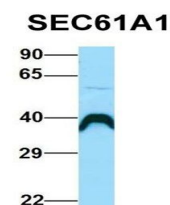
Product Datasheet

SEC61A1 antibody (orb326528)

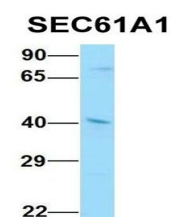
Description	Rabbit polyclonal antibody to SEC61A1
Species/Host	Rabbit
Reactivity	Canine, Equine, Goat, Guinea pig, Human, Mouse, Rat, Zebrafish
Conjugation	Unconjugated
Tested Applications	WB
Immunogen	The immunogen is a synthetic peptide directed towards the C-terminal region of Human SEC61A1
Target	SEC61A1
Preservatives	Liquid. Purified antibody supplied in 1x PBS buffer with 0.09% (w/v) sodium azide and 2% sucrose.
Form/Appearance	Liquid. Purified antibody supplied in 1x PBS buffer with 0.09% (w/v) sodium azide and 2% sucrose.
Concentration	0.5 mg/ml
Storage	For short term use, store at 2-8°C up to 1 week. For long term storage, store at -2°C in small aliquots to prevent freeze-thaw cycles.
Note	For research use only
Protein Sequence	Synthetic peptide located within the following region: TWIEVSGSSAKDVAKQLKEQQMVMRGHRETSVMVHELNRYIPTAAAFGGLC
Clonality	Polyclonal
MW	52kDa
Uniprot ID	P61619
NCBI	NP_037468
Expiration Date	12 months from date of receipt.



Western blot analysis of HT1080 Whole Cell lysate



Western blot analysis of human Fetal Lung tissue



Western blot analysis of human Placenta