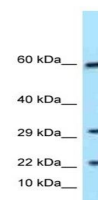


Product Datasheet

TRGC1 antibody (orb326369)

Description	Rabbit polyclonal antibody to TRGC1
Species/Host	Rabbit
Reactivity	Human
Conjugation	Unconjugated
Tested Applications	WB
Immunogen	The immunogen is a synthetic peptide directed towards the C-terminal region of human TRGC1
Target	TRGC2
Preservatives	Liquid. Purified antibody supplied in 1x PBS buffer with 0.09% (w/v) sodium azide and 2% sucrose.
Form/Appearance	Liquid. Purified antibody supplied in 1x PBS buffer with 0.09% (w/v) sodium azide and 2% sucrose.
Concentration	0.5 mg/ml
Storage	For short term use, store at 2-8°C up to 1 week. For long term storage, store at -20°C in small aliquots to prevent freeze-thaw cycles.
Note	For research use only
Protein Sequence	Synthetic peptide located within the following region: RCIVRHENNKNGVDQEIIFFPIKTDVITMDPKDNCSDKDANDTLLLQLTNT
Clonality	Polyclonal
MW	19kDa
Uniprot ID	P03986
Expiration Date	12 months from date of receipt.



Western blot analysis of human Fetal Liv...