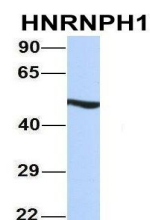


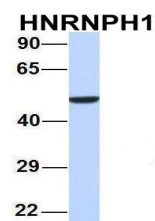
Product Datasheet

HNRNPH1 antibody (orb326259)

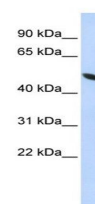
Description	Rabbit polyclonal antibody to HNRNPH1
Species/Host	Rabbit
Reactivity	Canine, Equine, Guinea pig, Human, Mouse, Rat
Conjugation	Unconjugated
Tested Applications	ICC, IF, IP, WB
Immunogen	The immunogen is a synthetic peptide directed towards the middle region of human HNRNPH1
Target	HNRNPH1
Preservatives	Liquid. Purified antibody supplied in 1x PBS buffer with 0.09% (w/v) sodium azide and 2% sucrose.
Form/Appearance	Liquid. Purified antibody supplied in 1x PBS buffer with 0.09% (w/v) sodium azide and 2% sucrose.
Concentration	0.5 mg/ml
Storage	For short term use, store at 2-8°C up to 1 week. For long term storage, store at -2°C in small aliquots to prevent freeze-thaw cycles.
Note	For research use only
Protein Sequence	Synthetic peptide located within the following region: FLNSTAGASGGAYEHRYVELFLNSTAGASGGAYGSQMMGGMGLSNQSSYG
Clonality	Polyclonal
MW	49 kDa
Uniprot ID	P31943
NCBI	NP_005511
Expiration Date	12 months from date of receipt.



Western blot analysis of human Jurkat cells.



Western blot analysis of human 721_B cells.



Western blot analysis of HepG2 cell lysate.